



2025

PORTABLE BAMBOO HOMES

"Designed by nature, carried on wheels."

**Bamboo House India
Hyderabad**



www.bamboohouseindia.org

"These Portable bamboo homes are suitable for installation only on land and not for terrace."

Introduction

Imagine homes that are not just built on the earth, but for the earth.

At Bamboo House India, we are pioneering a new chapter in eco-conscious living through portable engineered bamboo homes—lightweight, modular, and built with nature’s most renewable resource.

Designed for flexibility, these homes come with pre-installed electricals, bathrooms, kitchens, waterproof walling, and cement board flooring—ready to use, easy to relocate, and perfect for land installations, remote villages, farm houses, yoga centers, cafeteria, hospitals, schools, tourism, disaster-relief zones, and smart city projects.

With over 40 house sizes to suit every budget and a growing demand for sustainable housing, our model presents a high-impact, low-carbon solution with vast market potential.

Join us in transforming the future of housing—portable, affordable, and inspired by nature.

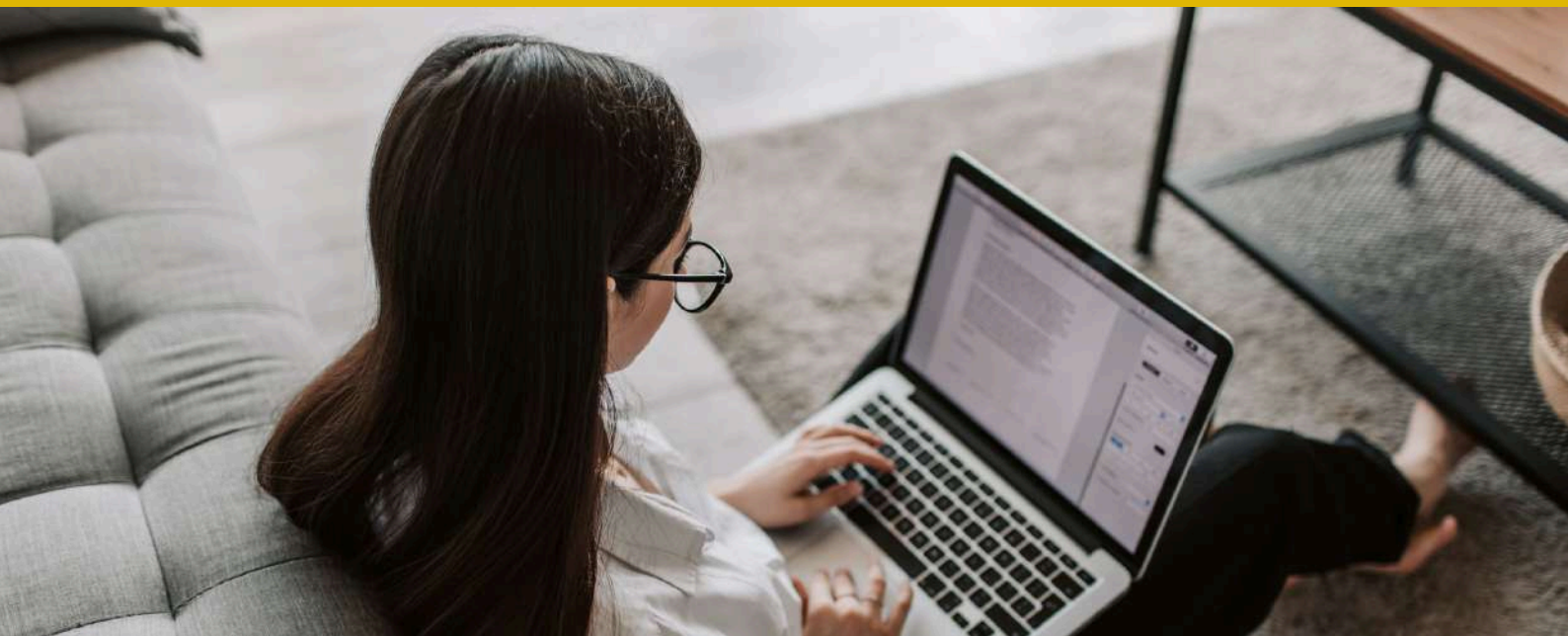


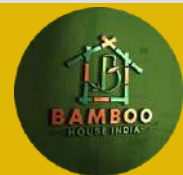
Portable Home Features

- ✓ Green living solution.
- ✓ No Cement Foundation Required.
- ✓ Life Over 20 Years.
- ✓ Construction Time 15 - 45 days
- ✓ Sustainable, Smart, and Ready to Move
- ✓ Pre-installed Waterproof Bamboo Walling (8 mm)
- ✓ Pre-installed Waterproof Cement Flooring (18 mm)
- ✓ PVC floor mat.
- ✓ Pre-installed Bathroom Setup
- ✓ Modular Kitchen Setup (4 ft x 1.5 ft)
- ✓ Pre-fitted Electricals (wiring, fan, lights, switches)
- ✓ Pre-fitted 2 Aluminium Windows (3 ft x 3 ft) with Grill
- ✓ Weatherproof & Termite-Resistant
- ✓ Fire-Retardant & Thermally Conducive
- ✓ Portable & Easy to Relocate
- ✓ All-Inclusive Price

⊘ Note: This model is available only for houses on land and not suitable for terrace installations.

♥ Sustainable, Affordable, and Ready-to-Use – Your Dream Eco-Home is Just a Call Away!





Cost of The House Includes

S.No	Details
1)	Cement Boards Flooring with PVC Floor Mat
2)	Engineered Bamboo Walling
3)	Celling With Engineered Bamboo Panels
4)	Electricals (Wiring + Fan + Lights)
5)	Bathroom (Commode + Washbasin + Taps+ Shower)
6)	Modular Kitchen Cabinet (Washbasin + Tap)
7)	Overhead Water tank provision on the Roof
8)	Entire Materials + Labour cost involved in the construction of the house
9)	G S T
10)	Crane Loading & Unloading Charges (Limit of Rs.4,000)

- Transportation charges from Hyderabad to the customer's location to be borne by the customer.
- The customer is responsible for connecting the house's electrical and sewerage systems to the main lines at the site through a local electrician and plumber at his/her cost.
- This model is designed exclusively for placement on open land and is not suitable for terrace installation.
- Before placing an order, the customer must ensure that the delivery truck can access his/her site without any issues.



Portable House Prices

(Only for Land Installation)

House Size : 8 ft x 12 ft

S.No	House Size	House Area	Specifications	Price (Rs.)
1)	8 ft x 12 ft	96 sft	Room	1,45,000
2)	8 ft x 12 ft	96 sft	Room with Bathroom	1,80,000
3)	8 ft x 12 ft	96 sft	Room with Bathroom & Modular Kitchen	1,95,000

Transportation charges from Hyderabad to the customer's location to be borne by the customer.



House Size : 12 ft x 12 ft

S.No	House Size	House Area	Specifications	Price (Rs.)
1)	12 ft x 12 ft	144 sft	Room	2,00,000
2)	12 ft x 12 ft	144 sft	Room with Bathroom	2,35,000
3)	12 ft x 12 ft	144 sft	Room with Bathroom & Modular Kitchen	2,50,000
4)	12 ft x 12 ft	144 sft	Room with Bathroom, Modular Kitchen & 4 ft frontal Balcony	2,75,000

Transportation charges from Hyderabad to the customer's location to be borne by the customer.



House Size : 12 ft x 16 ft

S.No	House Size	House Area	Specifications	Price (Rs.)
1)	12 ft x 16 ft	192 sft	Room	2,50,000
2)	12 ft x 16 ft	192 sft	Room with Bathroom	2,85,000
3)	12 ft x 16 ft	192 sft	Room with Bathroom & Modular Kitchen	3,00,000
4)	12 ft x 16 ft	192 sft	Room with Bathroom, Modular Kitchen & 4 ft frontal Balcony	3,20,000

Transportation charges from Hyderabad to the customer's location to be borne by the customer.



House Size : 12 ft x 20 ft

S.No	House Size	House Area	Specifications	Price (Rs.)
1)	12 ft x 20 ft	240 sft	Room	3,10,000
2)	12 ft x 20 ft	240 sft	Room with Bathroom	3,40,000
3)	12 ft x 20 ft	240 sft	Room with Bathroom & Modular Kitchen	3,60,000
4)	12 ft x 20 ft	240 sft	Room with Bathroom, Modular Kitchen & 4 ft frontal Balcony	3,80,000

Transportation charges from Hyderabad to the customer's location to be borne by the customer.



House Size : 12 ft x 24 ft

S.No	House Size	House Area	Specifications	Price (Rs.)
1)	12 ft x 24 ft	240 sft	Room	3,75,000
2)	12 ft x 24 ft	240 sft	Room with Bathroom	4,10,000
3)	12 ft x 24 ft	240 sft	Room with Bathroom & Modular Kitchen	4,25,000
4)	12 ft x 24 ft	240 sft	Room with Bathroom, Modular Kitchen & 4 ft frontal Balcony	4,55,000
5)	12 ft x 24 ft	240 sft	Hall + 1 Bedroom with Bathroom, Modular Kitchen & 4 ft frontal Balcony	4,75,000

Transportation charges from Hyderabad to the customer's location to be borne by the customer.



House Size : 12 ft x 28 ft

S.No	House Size	House Area	Specifications	Price (Rs.)
1)	12 ft x 28 ft	336 sft	Room	3,95,000
2)	12 ft x 28 ft	336 sft	Room with Bathroom	4,30,000
3)	12 ft x 28 ft	336 sft	Room with Bathroom & Modular Kitchen	4,45,000
4)	12 ft x 28 ft	336 sft	Room with Bathroom, Modular Kitchen & 4 ft frontal Balcony	4,70,000
5)	12 ft x 28 ft	336 sft	Hall + 1 BedRoom with Bathroom, Modular Kitchen & 4 ft frontal Balcony	5,00,000

Transportation charges from Hyderabad to the customer's location to be borne by the customer.



House Size : 12 ft x 32 ft

S.No	House Size	House Area	Specifications	Price (Rs.)
1)	12 ft x 32 ft	384 sft	Room	4,90,000
2)	12 ft x 32 ft	384 sft	Room with Bathroom	5,25,000
3)	12 ft x 32 ft	384 sft	Room with Bathroom & Modular Kitchen	5,40,000
4)	12 ft x 32 ft	384 sft	Room with Bathroom, Modular Kitchen & 4 ft frontal Balcony	5,60,000
5)	12 ft x 32 ft	384 sft	Hall + 1 Bedroom with Bathroom, Modular Kitchen & 4 ft frontal Balcony	5,80,000
6)	12 ft x 32 ft	384 sft	1 Hall + 2 Bedrooms + Bathroom + Modular Kitchen + 4 ft frontal Balcony	5,95,000

Transportation charges from Hyderabad to the customer's location to be borne by the customer.



House Size : 12 ft x 36 ft

S.No	House Size	House Area	Specifications	Price (Rs.)
1)	12 ft x 36 ft	432 sft	Room	5,50,000
2)	12 ft x 36 ft	432 sft	Room with Bathroom	5,85,000
3)	12 ft x 36 ft	432 sft	Room with Bathroom & Modular Kitchen	6,00,000
4)	12 ft x 36 ft	432 sft	Room with Bathroom, Modular Kitchen & 4 ft frontal Balcony	6,25,000
5)	12 ft x 36 ft	432 sft	Hall + 1 Bedroom with Bathroom, Modular Kitchen & 4 ft frontal Balcony	6,40,000
6)	12 ft x 36 ft	432 sft	1 Hall + 2 Bedrooms + Bathroom + Modular Kitchen + 4 ft frontal Balcony	6,55,000

Transportation charges from Hyderabad to the customer's location to be borne by the customer.



House Size : 12 ft x 40 ft

S.No	House Size	House Area	Specifications	Price (Rs.)
1)	12 ft x 40 ft	480 sft	Room	6,10,000
2)	12 ft x 40 ft	480 sft	Room with Bathroom	6,40,000
3)	12 ft x 40 ft	480 sft	Room with Bathroom & Modular Kitchen	6,60,000
4)	12 ft x 40 ft	480 sft	Room with Bathroom, Modular Kitchen & 4 ft frontal Balcony	6,80,000
5)	12 ft x 40 ft	480 sft	Hall + 1 Bedroom with Bathroom, Modular Kitchen & 4 ft frontal Balcony	6,95,000
6)	12 ft x 40 ft	480 sft	1 Hall + 2 Bedrooms + Bathroom + Modular Kitchen + 4 ft frontal Balcony	7,10,000
7)	12 ft x 40 ft	480 sft	1 Hall + 3 Bedrooms + Bathroom + Modular Kitchen + 4 ft frontal Balcony	7,30,000

Transportation charges from Hyderabad to the customer's location to be borne by the customer.



Exteriors





Interiors





**Bamboo House India
(Hyderabad)**

**www.bamboohouseindia.org
WhatsApp : 83419 05597**