



2025

# **BAMBOO HOMES**

---

**FOR TERRACE**

**"Move with Nature, Live with Bamboo."**

**Bamboo House India  
Hyderabad**





[www.bamboohouseindia.org](http://www.bamboohouseindia.org)

**"Conventional Bamboo Homes for Terrace."**



## Introduction

Imagine homes that are not just built on the earth, but for the earth.

At Bamboo House India, we are pioneering a new chapter in eco-conscious living through engineered bamboo homes.

Our Conventional engineered bamboo houses are an ideal solution for terrace installations in urban spaces. These structures are lightweight yet strong, making them perfect for rooftops without adding excessive load. Crafted from treated and weather-resistant engineered bamboo panels, they offer durability, thermal comfort, and a natural aesthetic that blends beautifully with modern architecture. Easy to assemble and dismantle, they serve as excellent spaces for studios, guest rooms, home offices, or eco-lounges. Engineered for stability and sustainability, these bamboo houses bring the warmth of nature to city life while promoting green living on every level—starting from the top.

With over 40 house sizes to suit every budget and a growing demand for sustainable housing, our model presents a high-impact, low-carbon solution with vast market potential.



# Cost of The House Does Not Include

S.No	To Be Arranged By Customer At His / Her Cost
1)	Civil Works
2)	Flooring
3)	Electricals
4)	Plumbing & Sewerage
9)	Food & Accommodation to 2/3 Members to be provided at the site during construction period for out of Hyderabad projects.



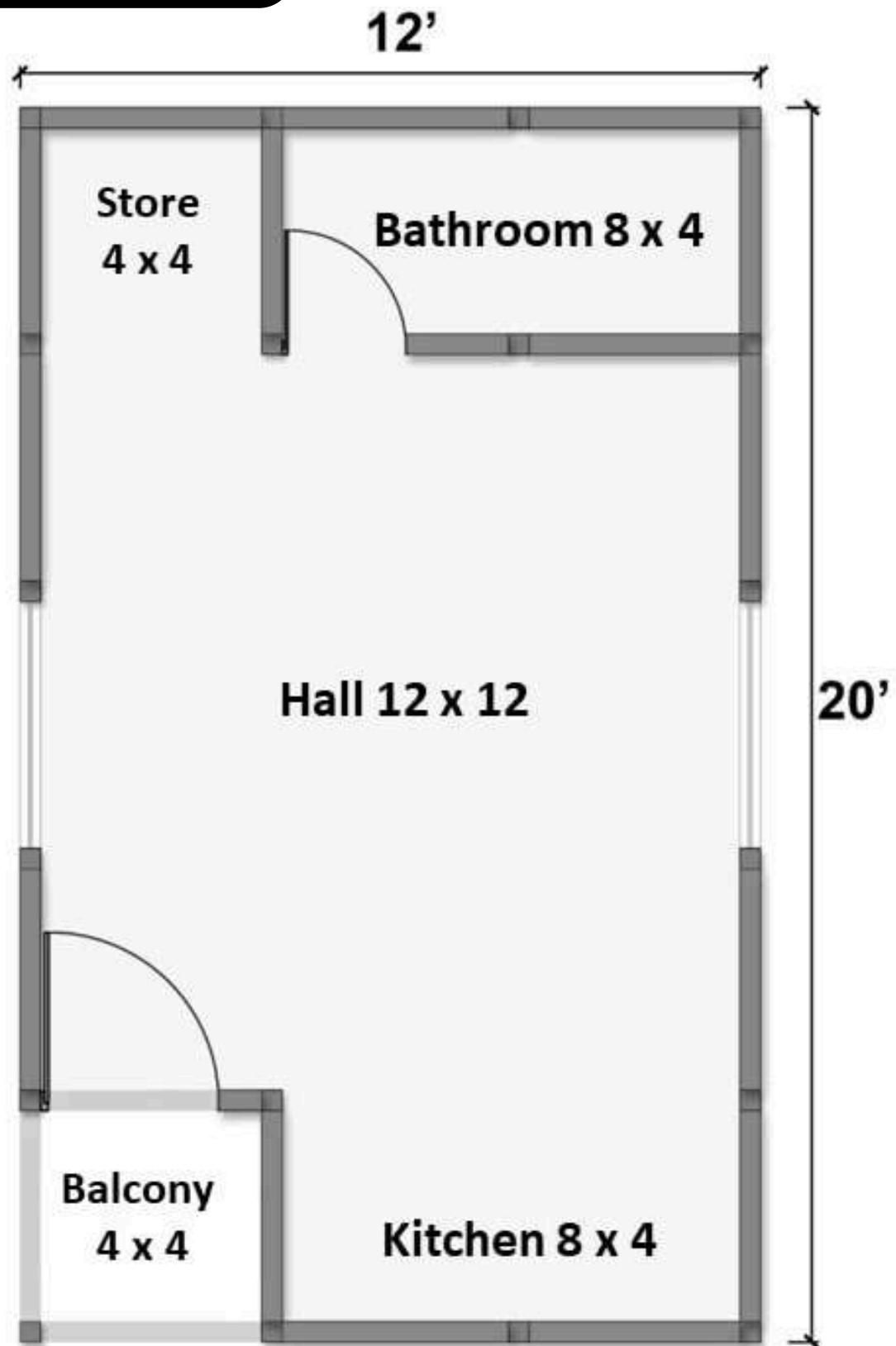




# Bamboo House Prices

(for Terrace)

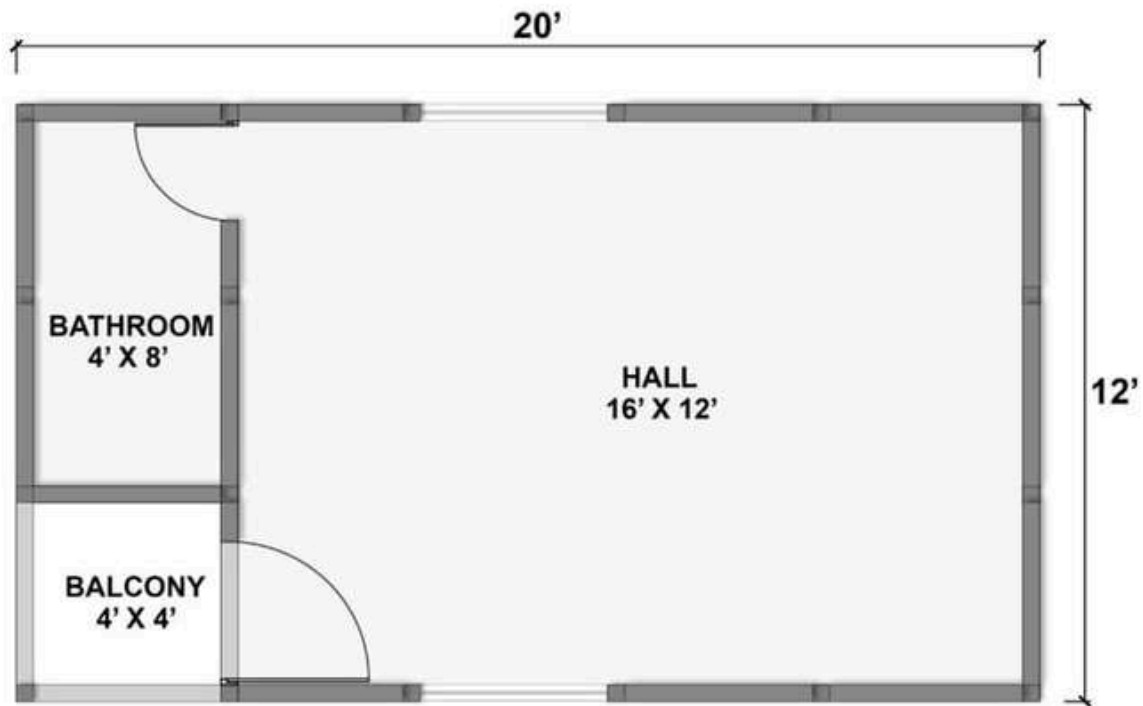
# PLAN 1



House Cost Mentioned Does Not include cost of Civil, electricals, flooring and plumbing and the said costs has to be borne by the customer.

**RS.2,75,000/-**

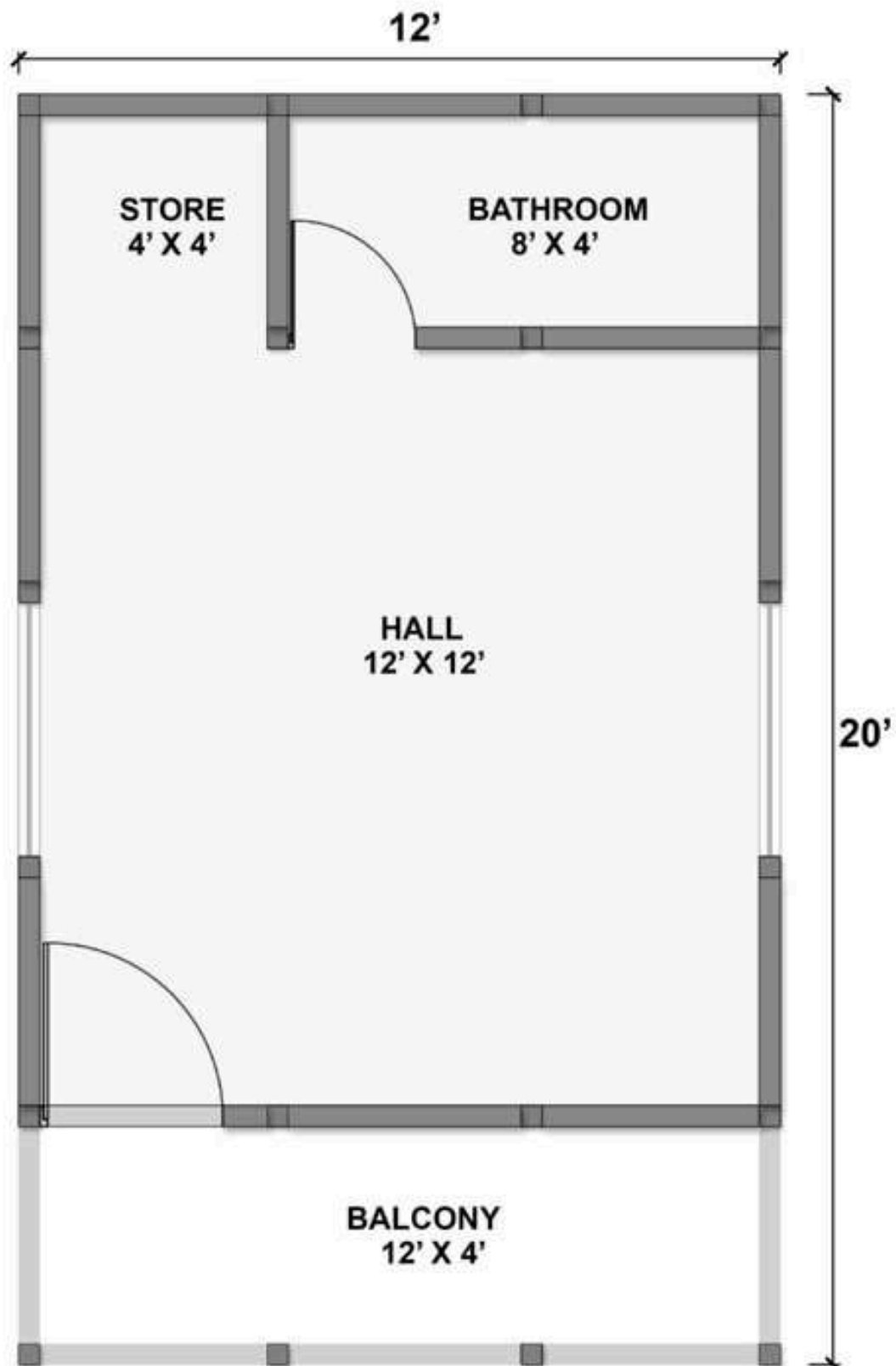
# PLAN 2



House Cost Mentioned Does Not include cost of Civil, electricals, flooring and plumbing and the said costs has to be borne by the customer.

**RS.2,85,000**

# PLAN 3

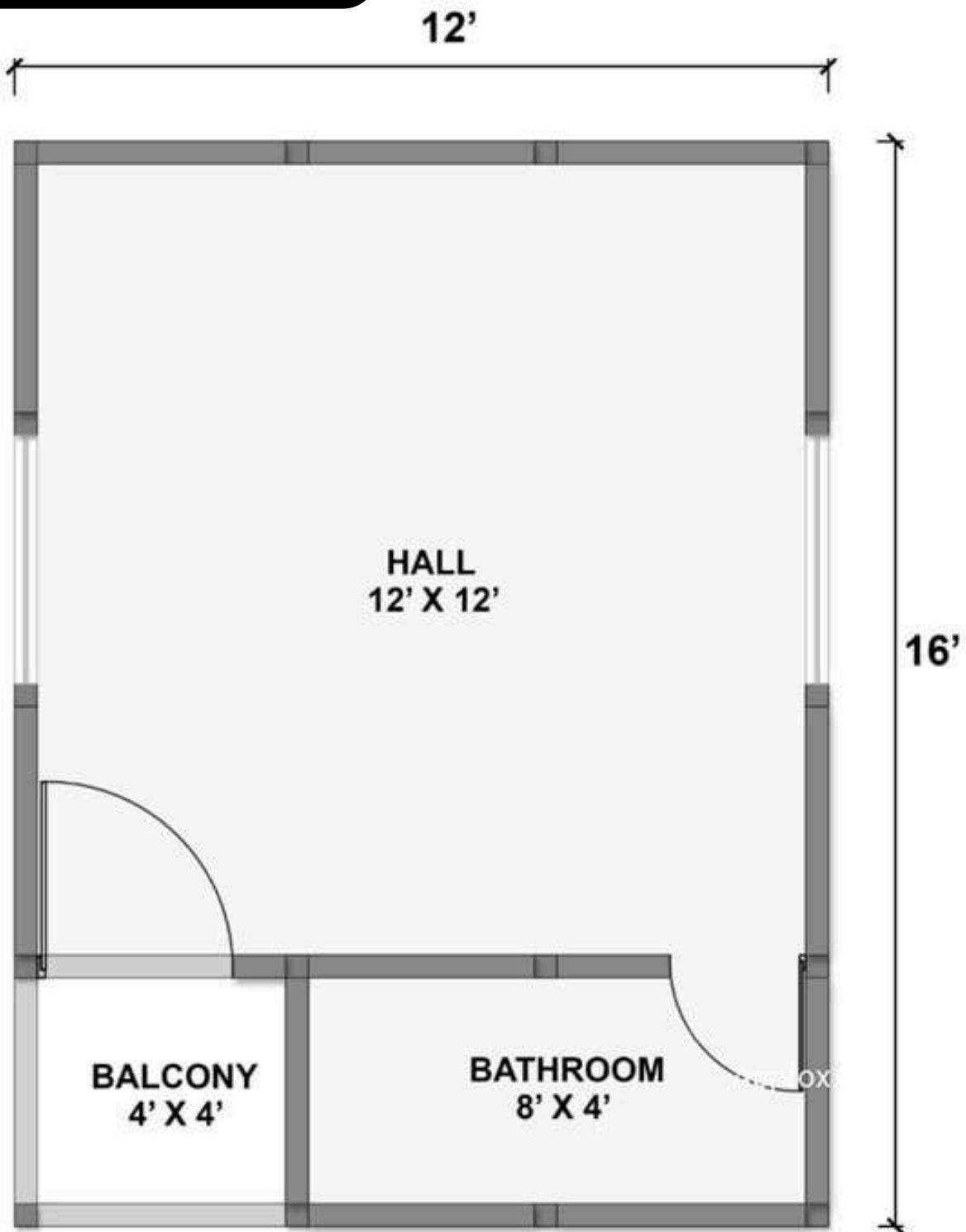


House Cost Mentioned Does Not include cost of Civil, electricals, flooring and plumbing and the said costs has to be borne by the customer.

## RS.2,65,000



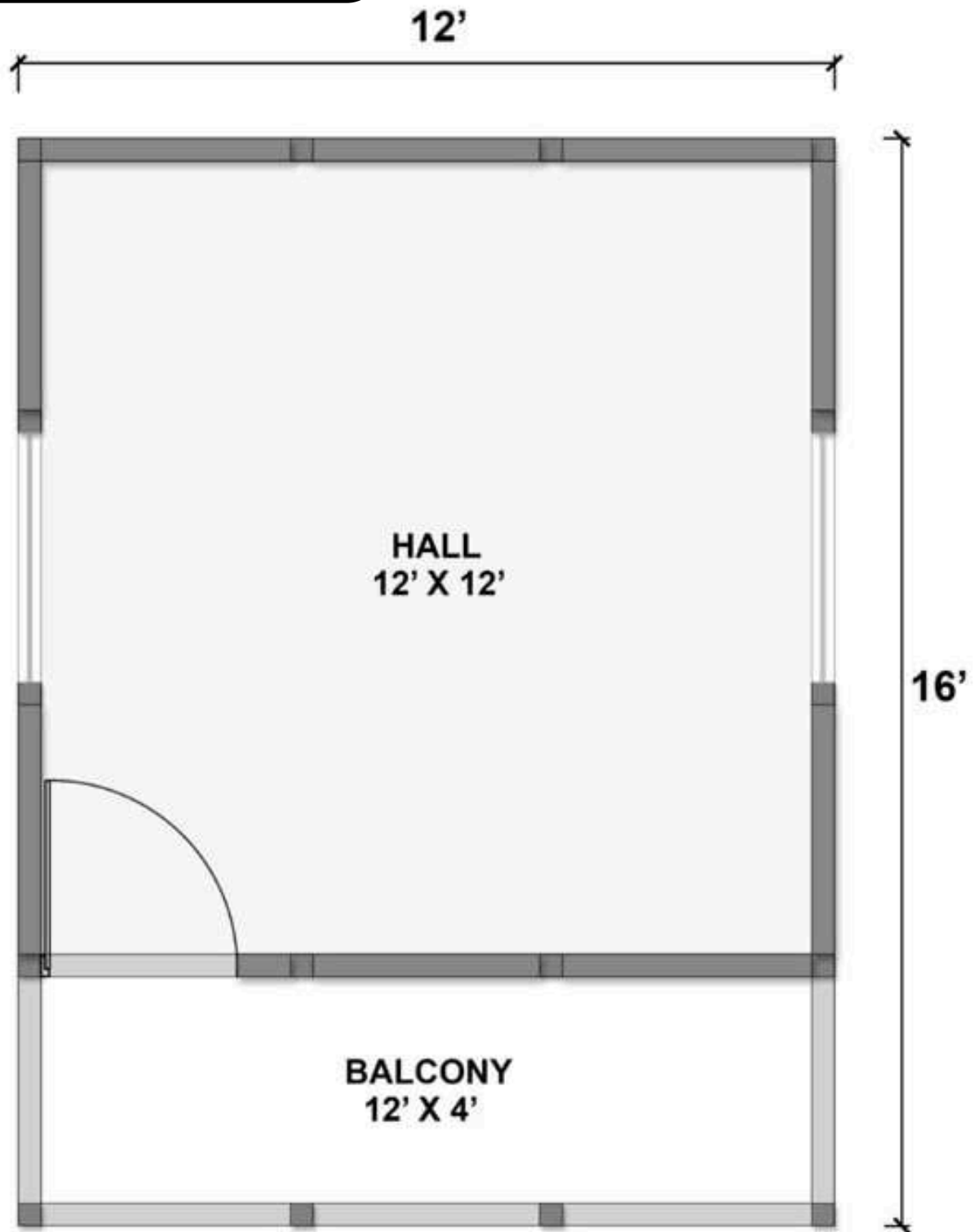
# PLAN 4



House Cost Mentioned Does Not include cost of Civil, electricals, flooring and plumbing and the said costs has to be borne by the customer.

**RS.2,45,000**

# PLAN 5

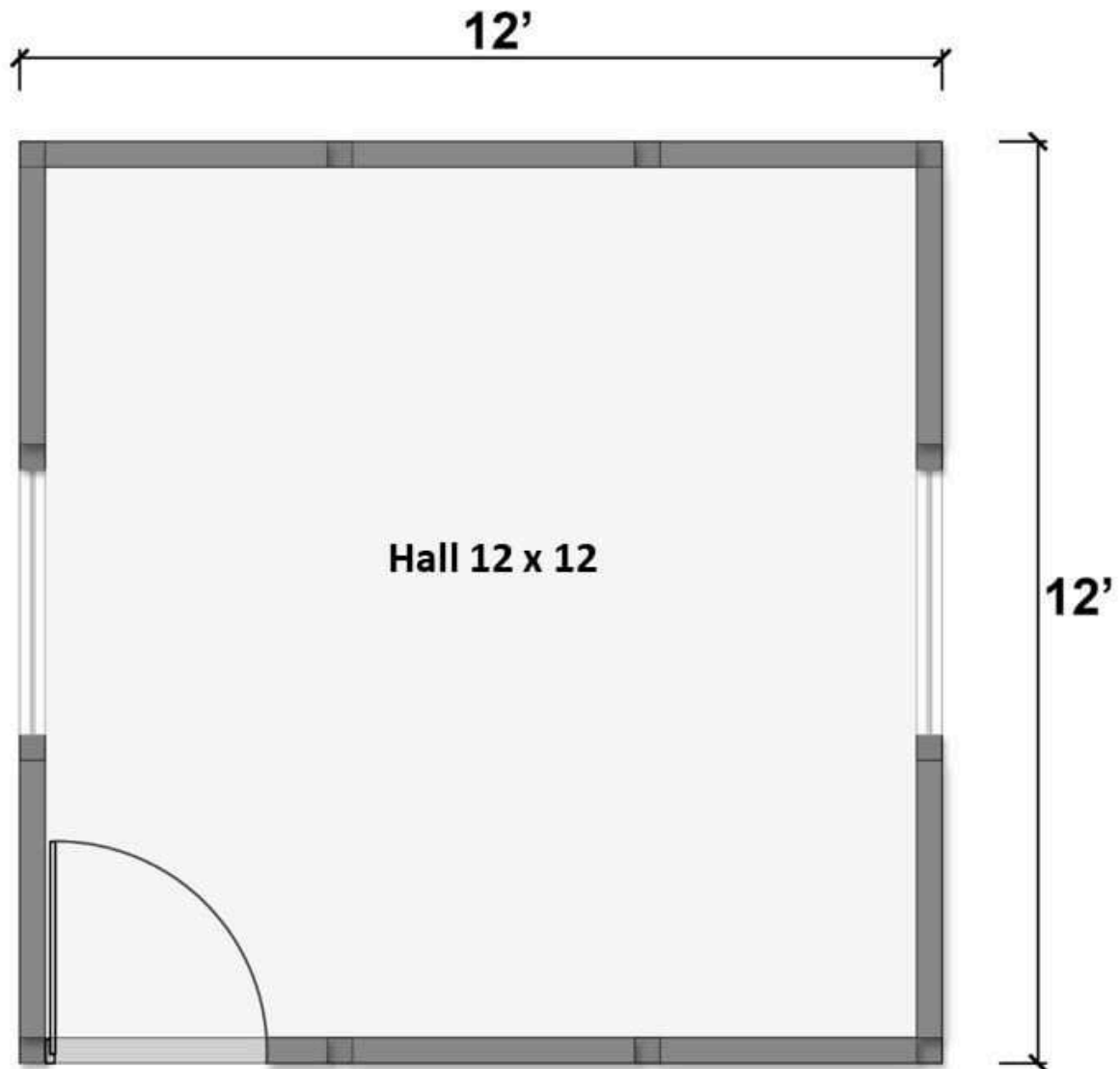


House Cost Mentioned Does Not include cost of Civil, electricals, flooring and plumbing and the said costs has to be borne by the customer.

**RS.2,35,000**



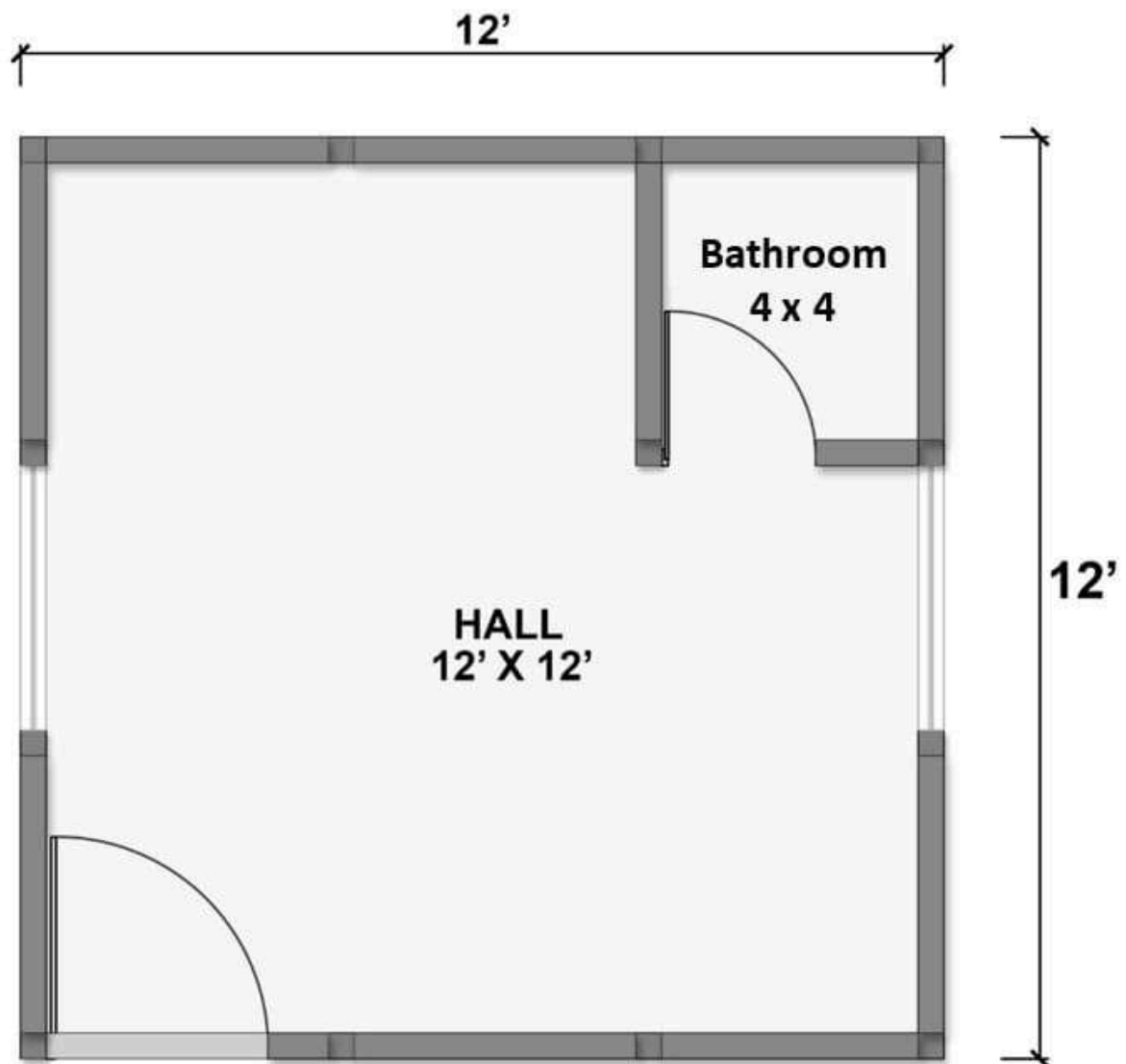
# PLAN 6



House Cost Mentioned Does Not include cost of Civil, electricals, flooring and plumbing and the said costs has to be borne by the customer.

## 1,80,000

# PLAN 7

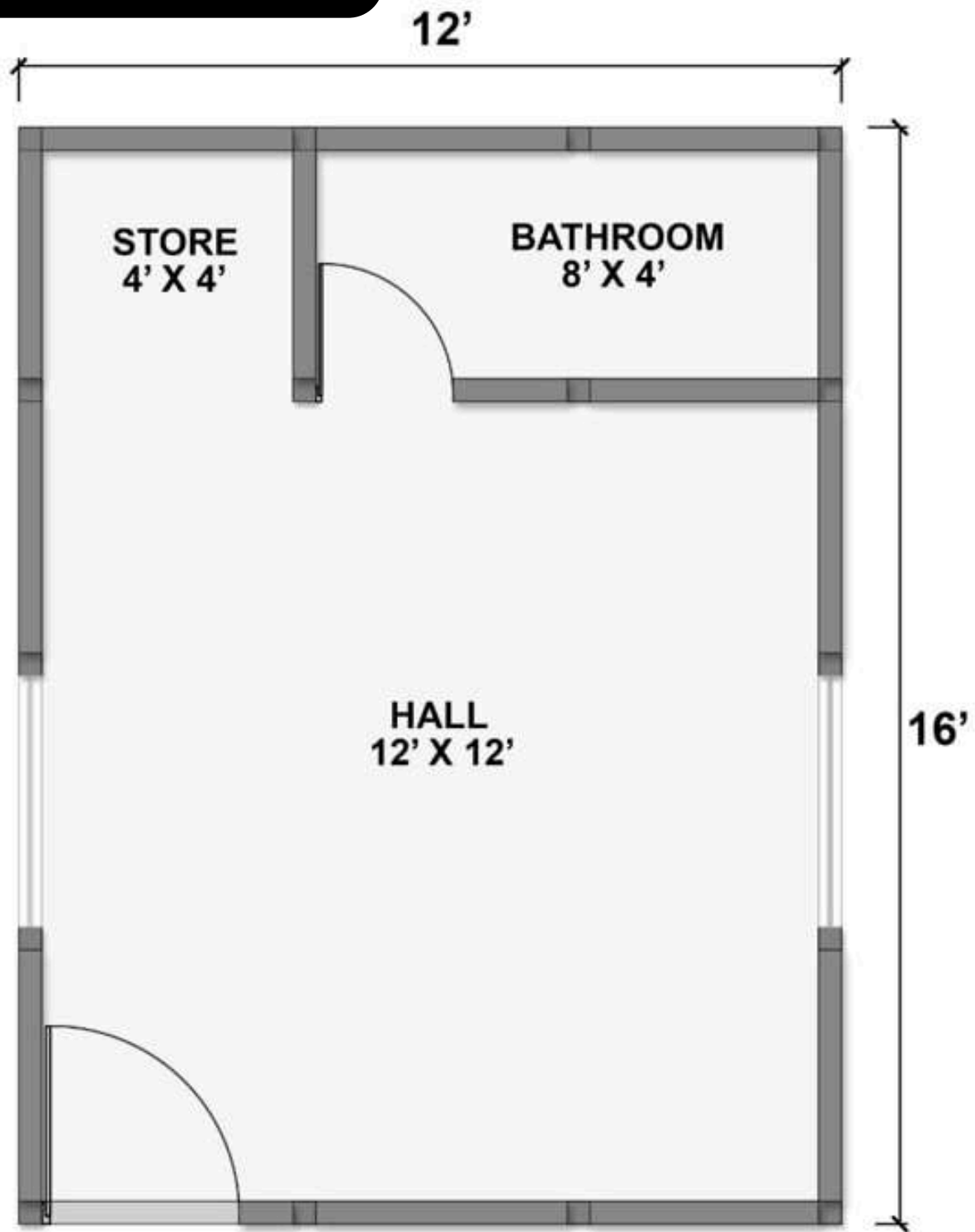


House Cost Mentioned Does Not include cost of Civil, electricals, flooring and plumbing and the said costs has to be borne by the customer.

**1,95,000**



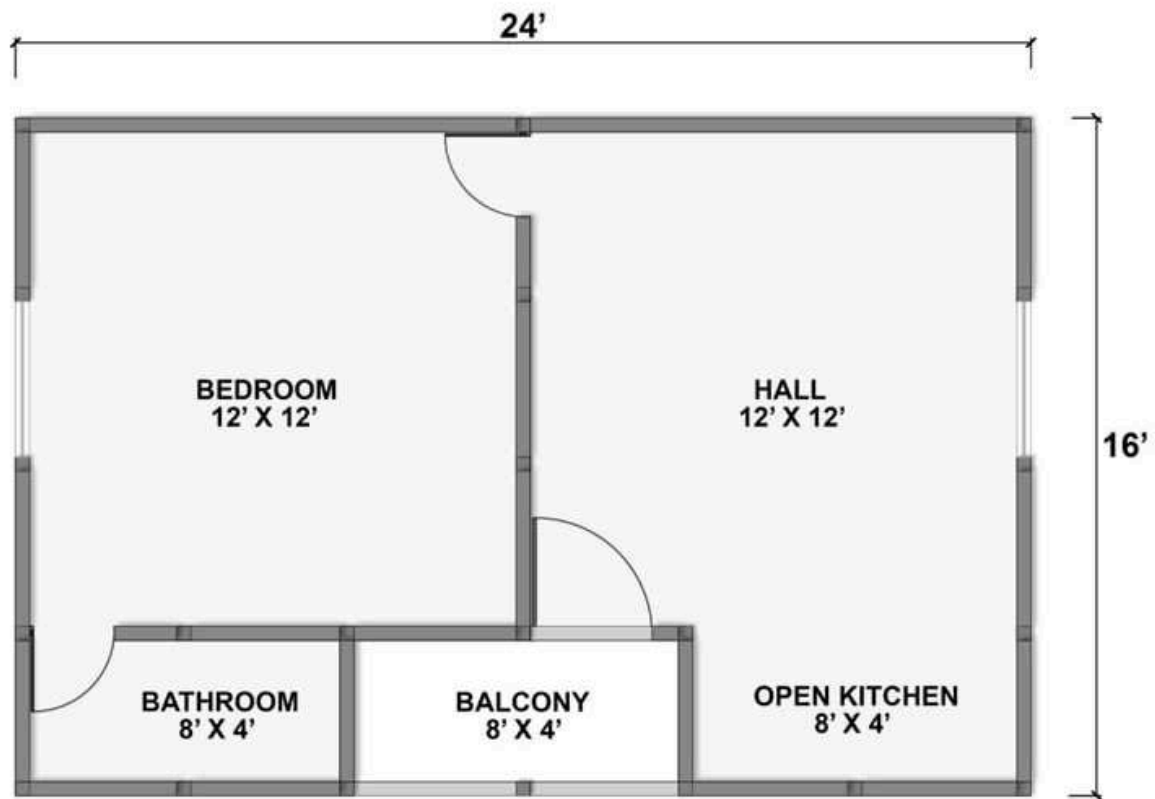
# PLAN 8



House Cost Mentioned Does Not include cost of Civil, electricals, flooring and plumbing and the said costs has to be borne by the customer.

**RS.2,50,000/-**

# PLAN 9

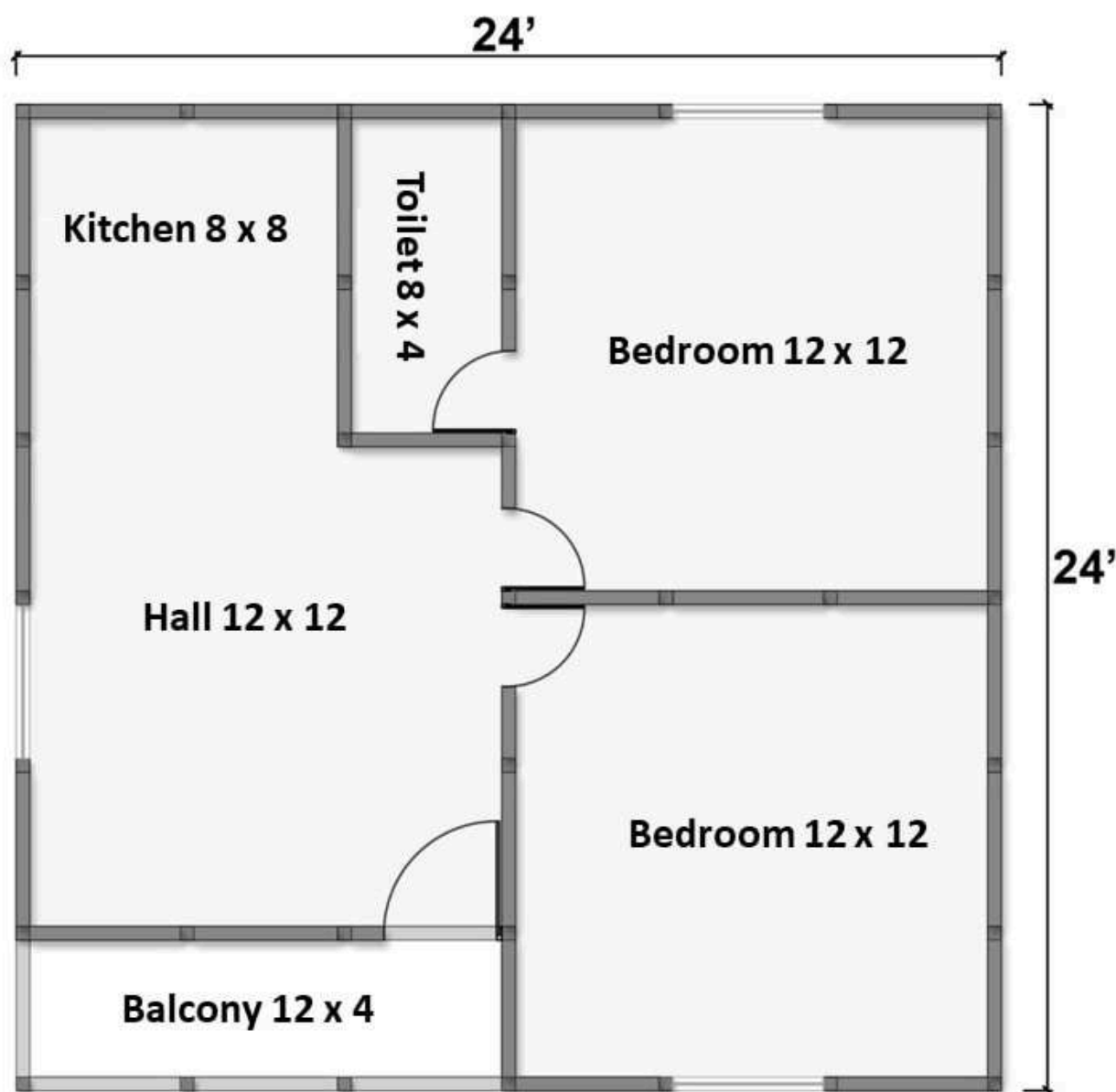


House Cost Mentioned Does Not include cost of Civil, electricals, flooring and plumbing and the said costs has to be borne by the customer.

## RS.4,50,000



# PLAN 10



House Cost Mentioned Does Not include cost of Civil, electricals, flooring and plumbing and the said costs has to be borne by the customer.

**RS.5,75,000/-**

# PLAN 11



House Cost Mentioned Does Not include cost of Civil, electricals, flooring and plumbing and the said costs has to be borne by the customer.

**RS.5,75,000/-**

# PLAN 12

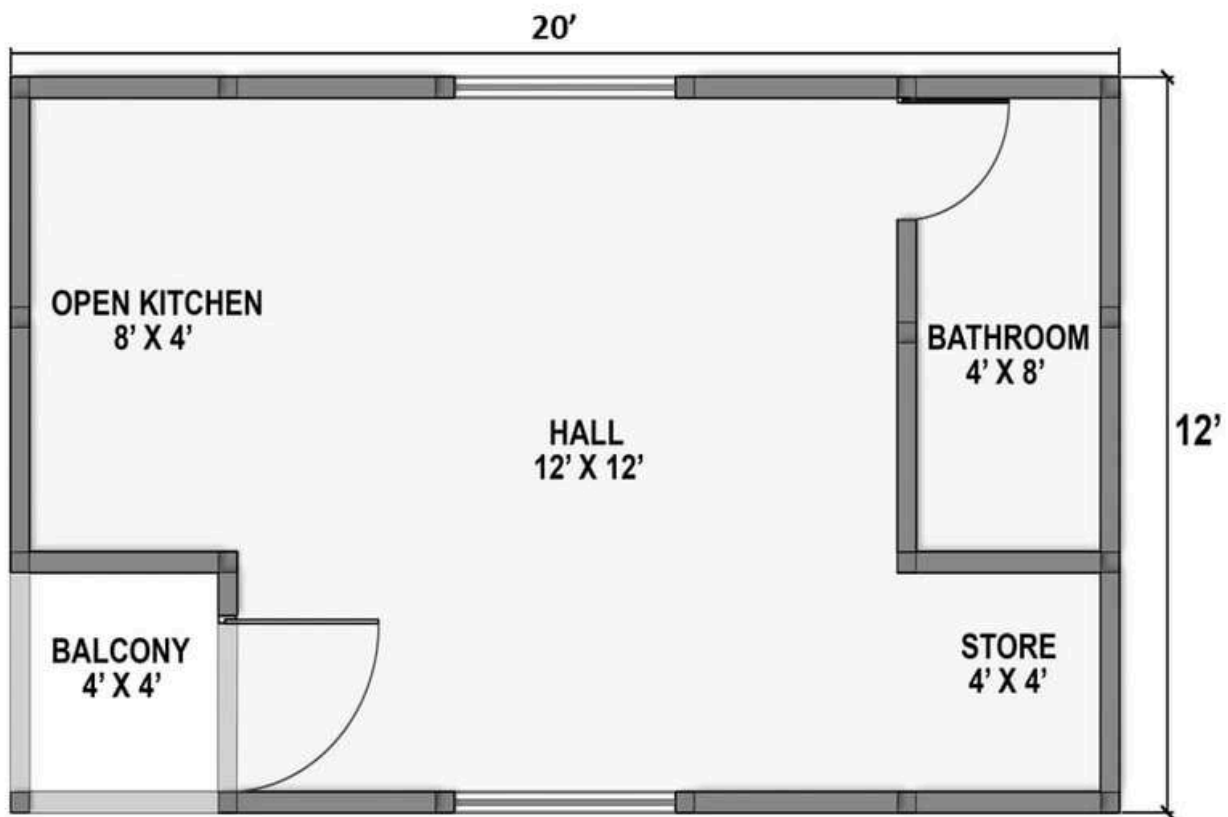


House Cost Mentioned Does Not include cost of Civil, electricals, flooring and plumbing and the said costs has to be borne by the customer.

**RS.5,75,000/-**



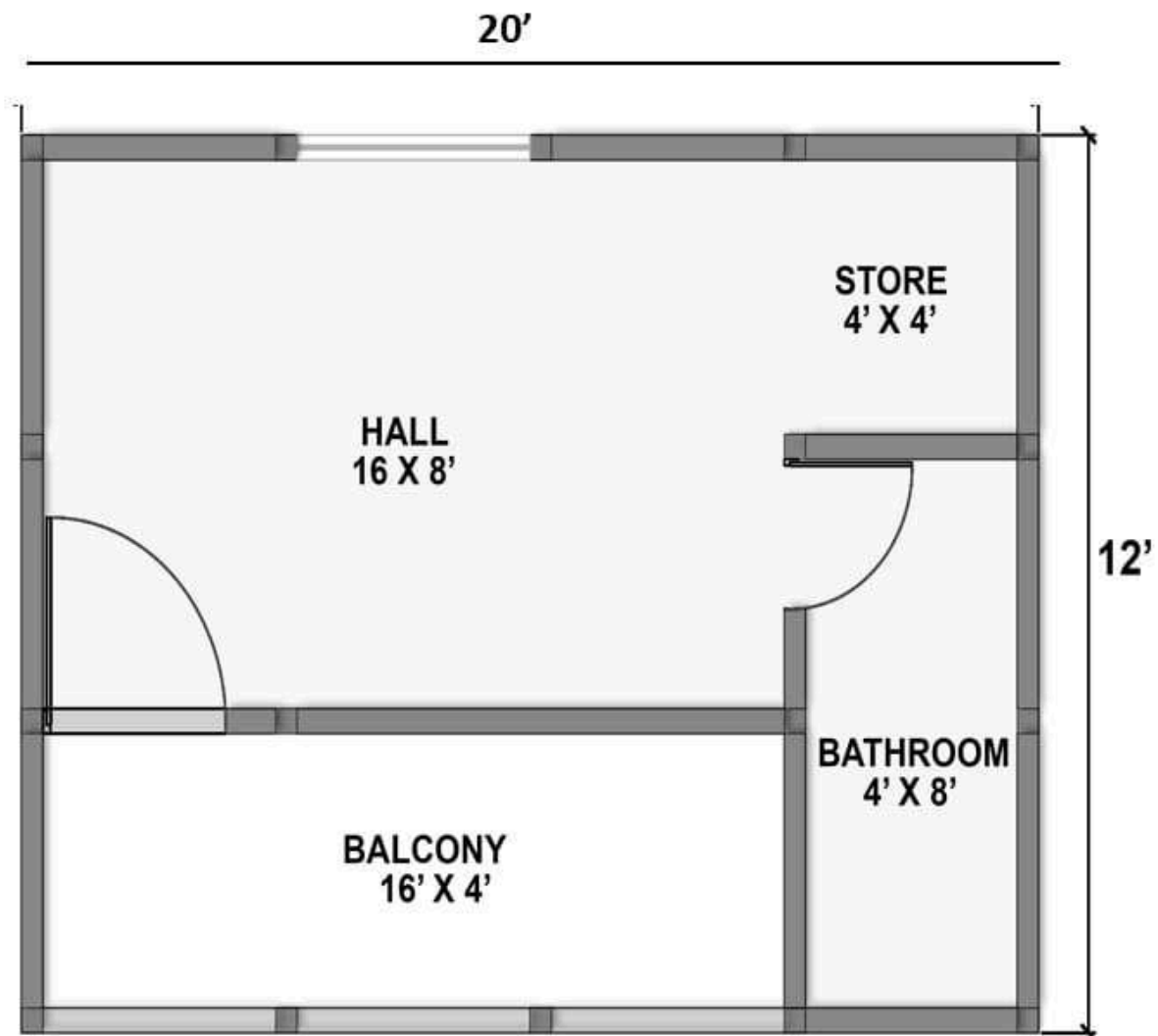
# PLAN 13



House Cost Mentioned Does Not include cost of Civil, electricals, flooring and plumbing and the said costs has to be borne by the customer.

**RS.3,00,000/-**

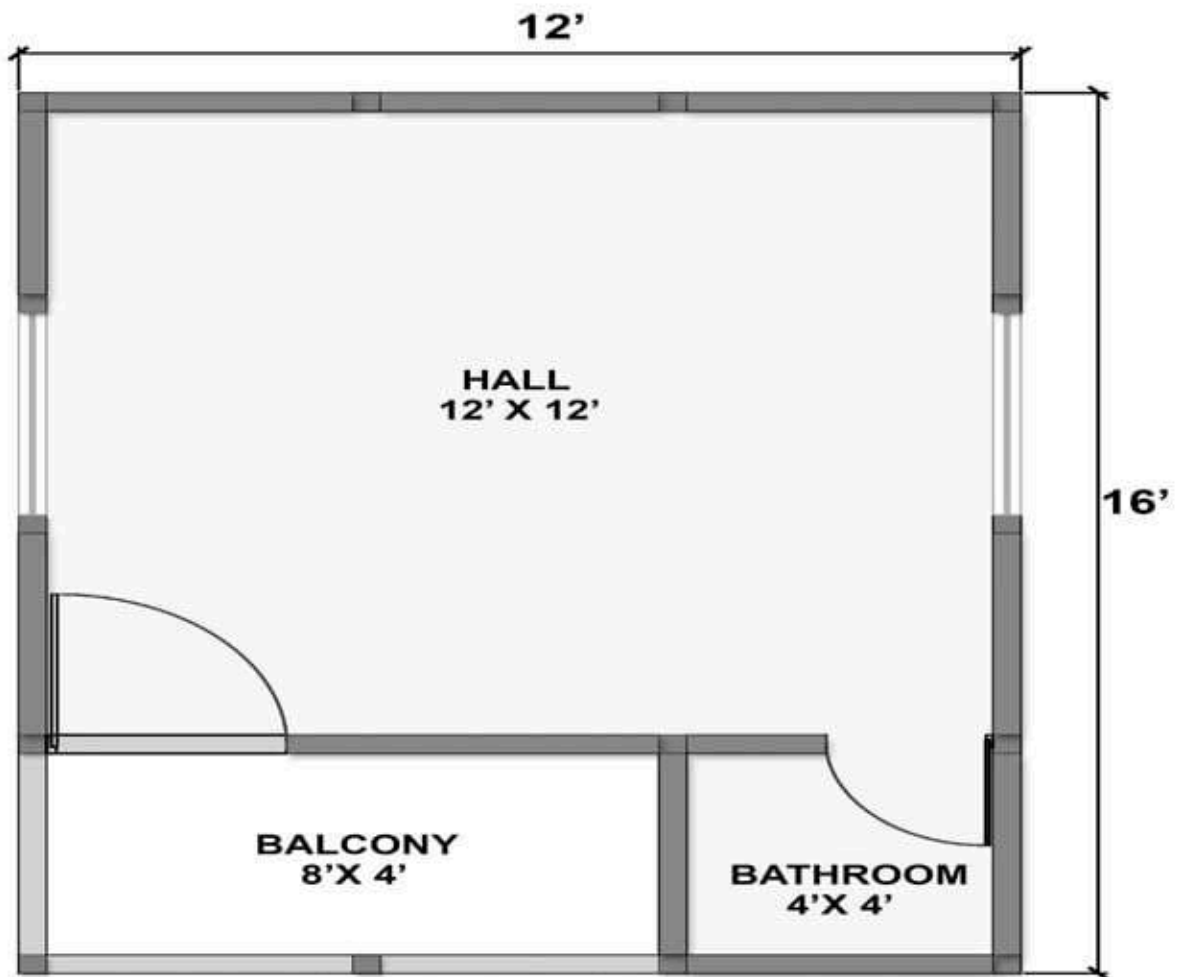
# PLAN 14



House Cost Mentioned Does Not include cost of Civil, electricals, flooring and plumbing and the said costs has to be borne by the customer.

**RS.3,00,000/-**

# PLAN 15

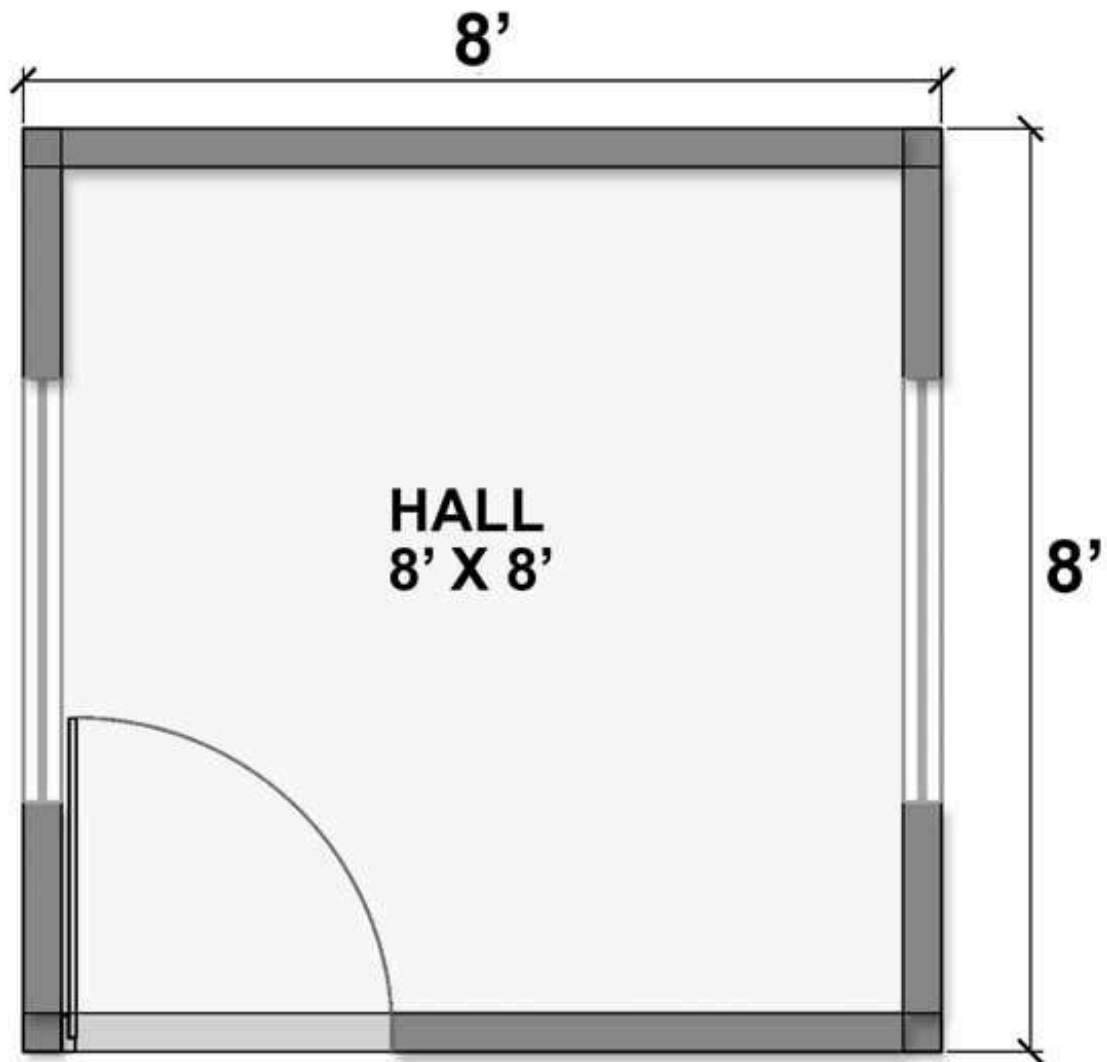


House Cost Mentioned Does Not include cost of Civil, electricals, flooring and plumbing and the said costs has to be borne by the customer.

**RS.2,60,000/-**



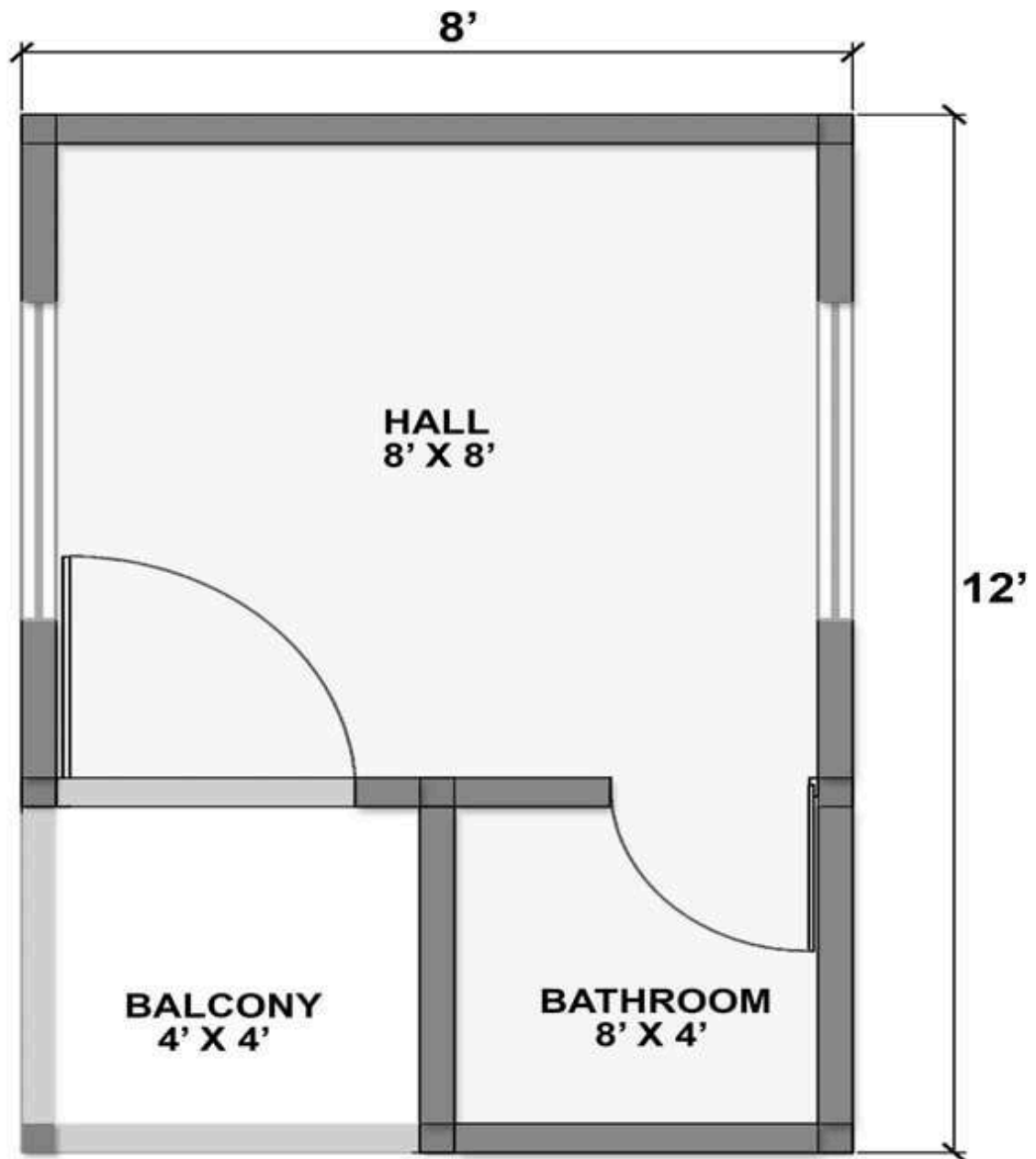
# PLAN 16



House Cost Mentioned Does Not include cost of Civil, electricals, flooring and plumbing and the said costs has to be borne by the customer.

**RS.1,00,000/-**

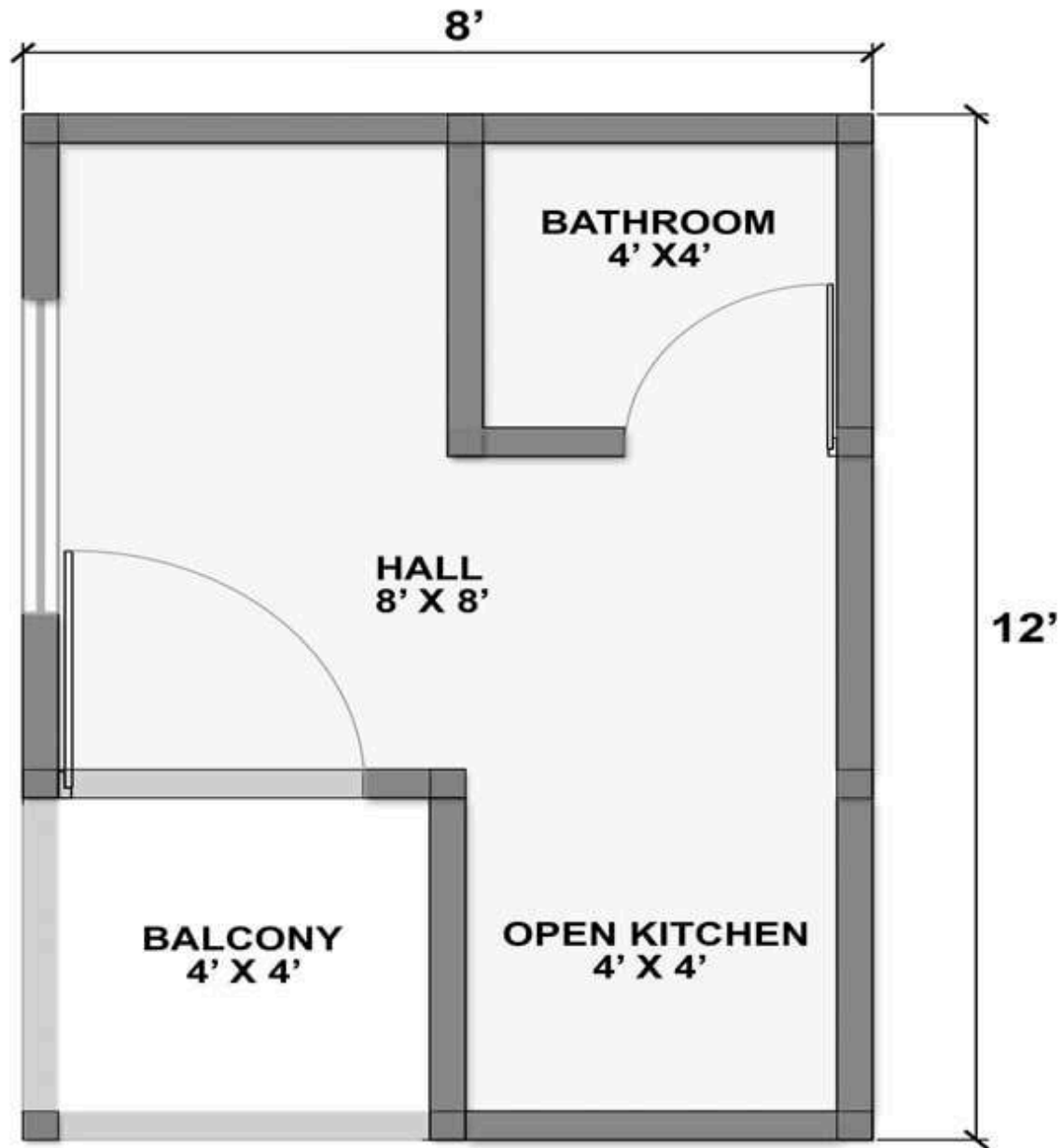
# PLAN 17



House Cost Mentioned Does Not include cost of Civil, electricals, flooring and plumbing and the said costs has to be borne by the customer.

**RS.1,40,000/-**

# PLAN 18



House Cost Mentioned Does Not include cost of Civil, electricals, flooring and plumbing and the said costs has to be borne by the customer.

**RS.1,70,000/-**





## Exteriors







## Interiors







**Bamboo House India**  
**(Hyderabad)**

**[www.bamboohouseindia.org](http://www.bamboohouseindia.org)**  
**WhatsApp : 83419 05597**